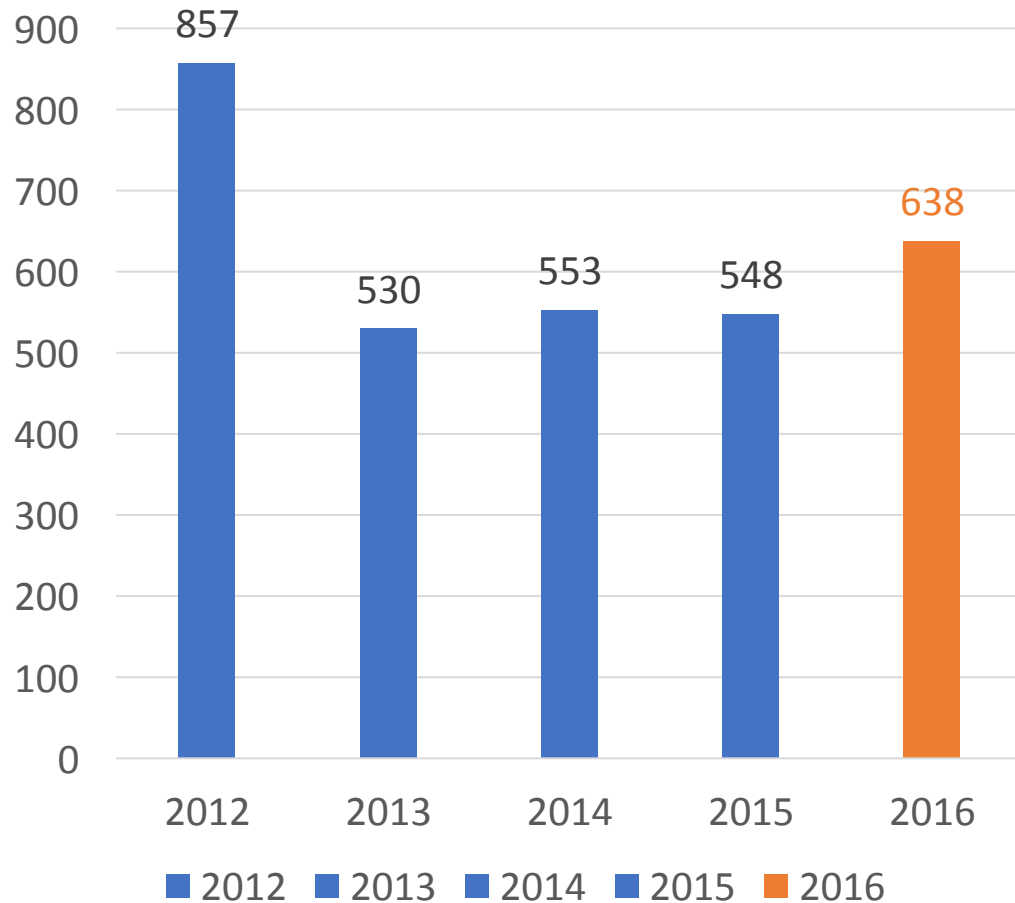
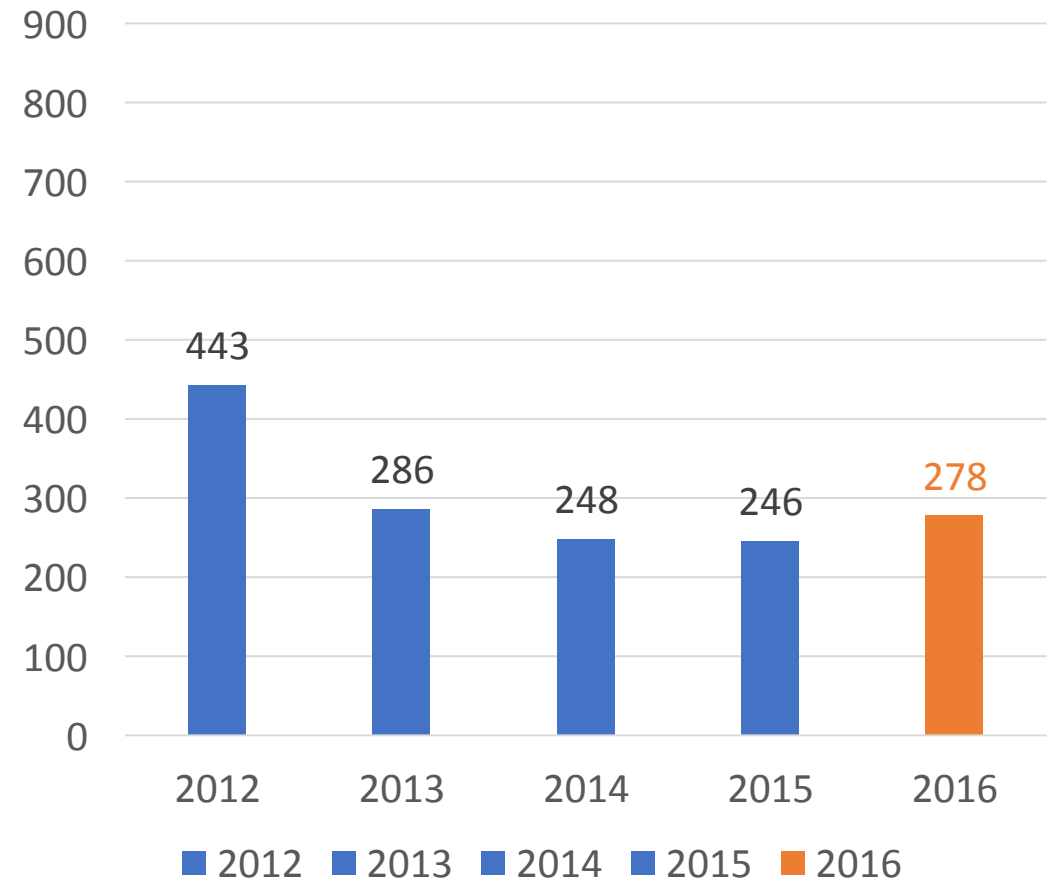


# Suspensions trending up for all students and for Black students in Fall 2016-2017

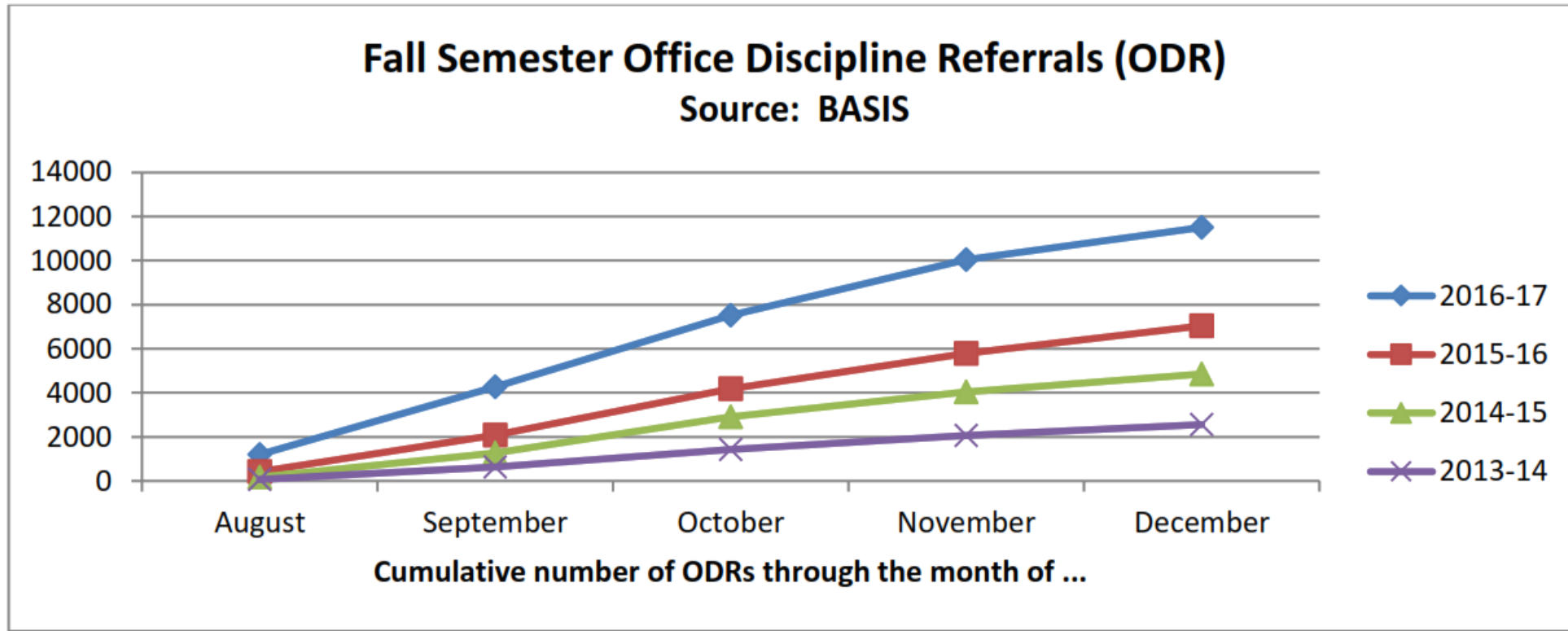
All Students



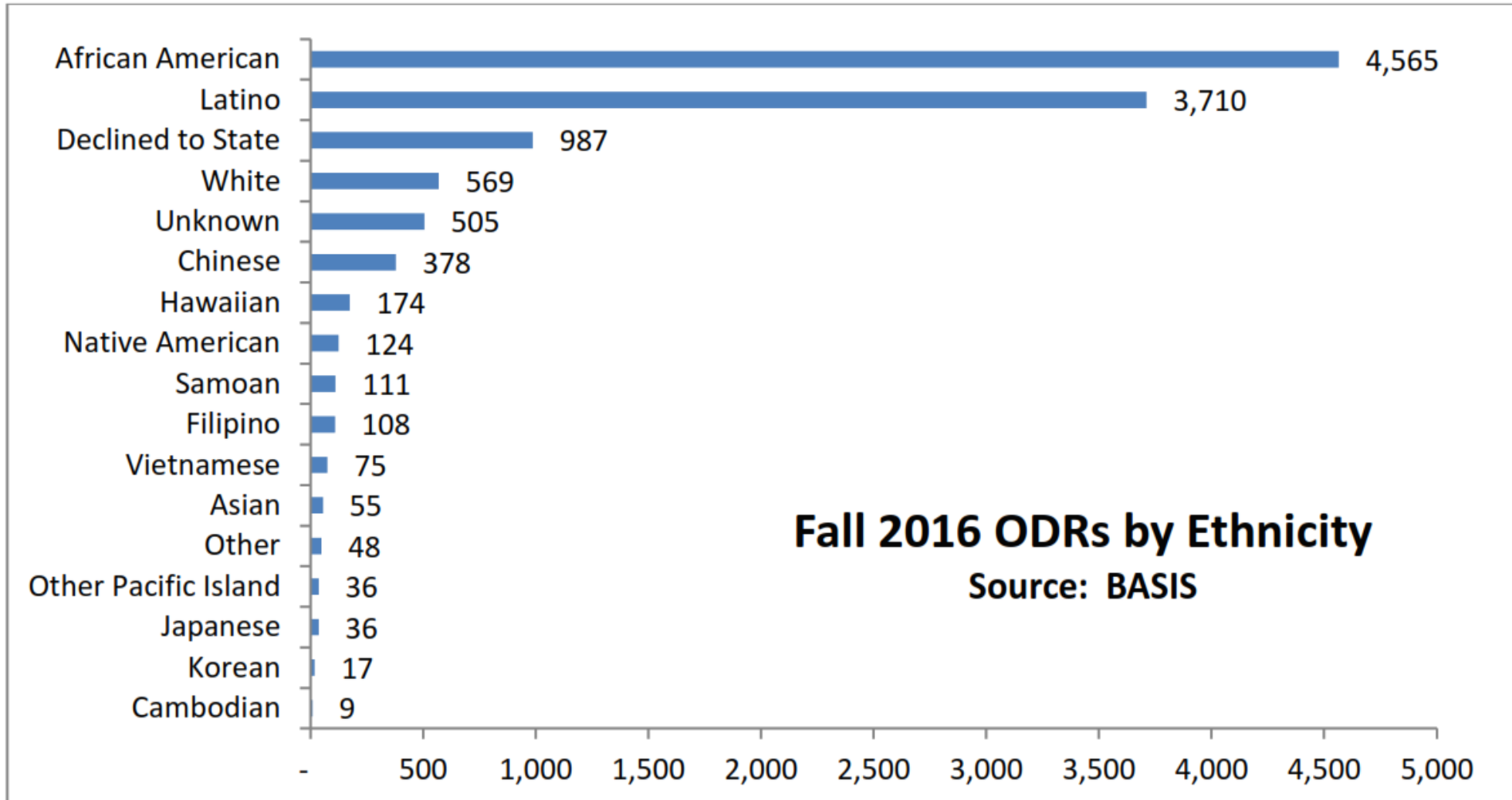
Black Students



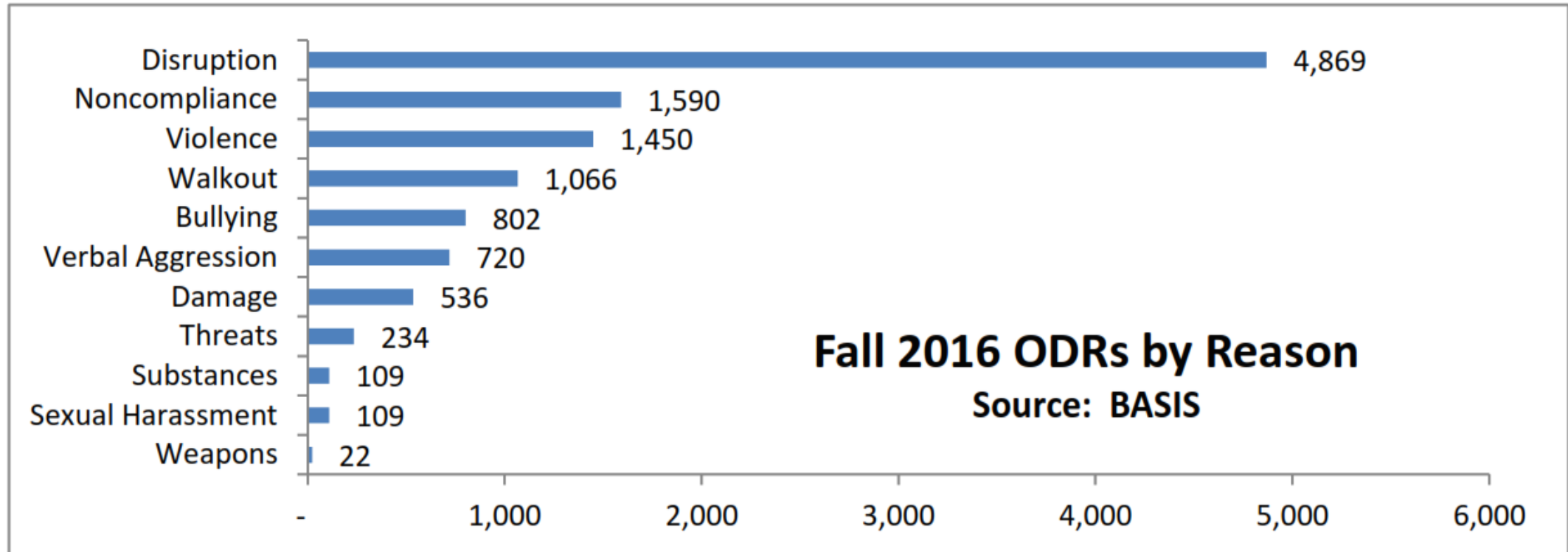
# Increase in office referrals



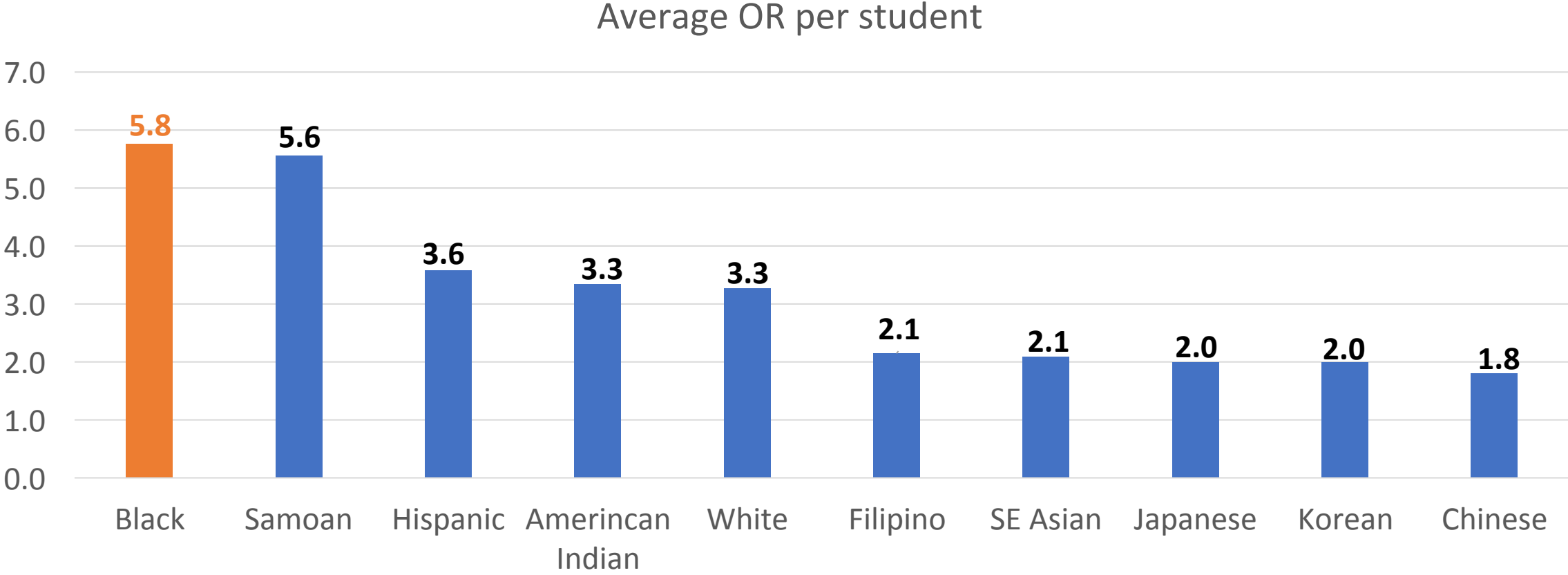
# Over 4,500 office referrals among Black students in just one semester



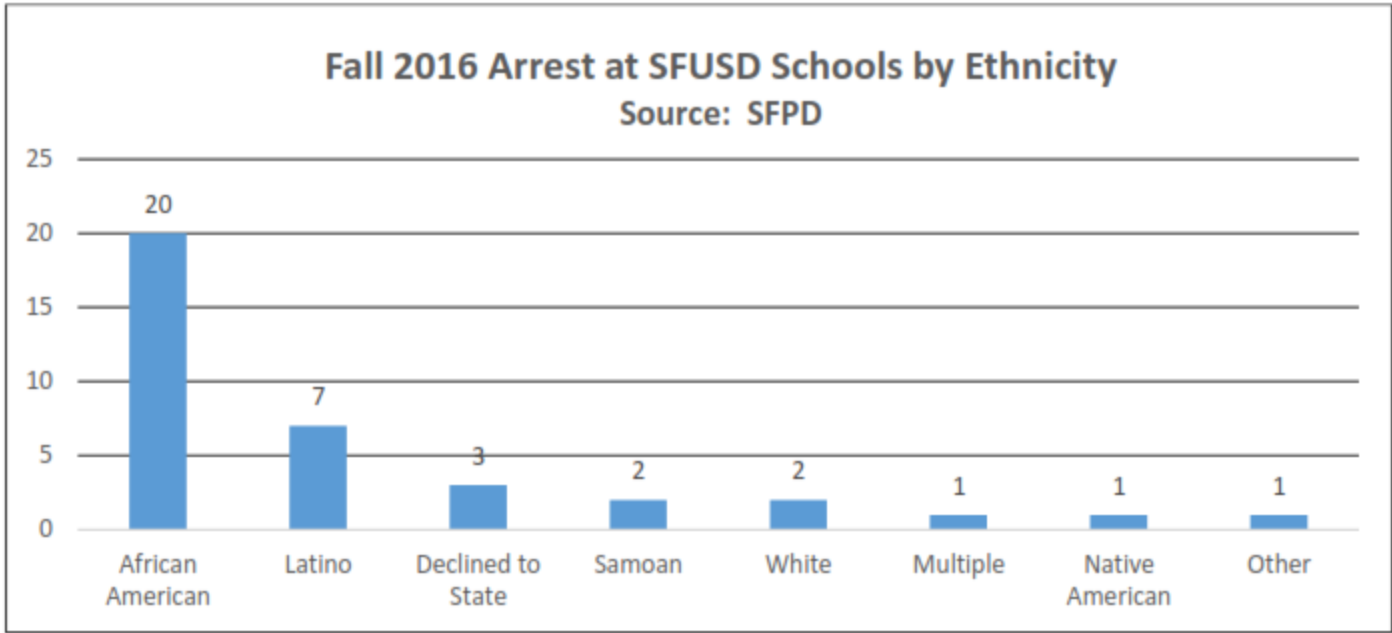
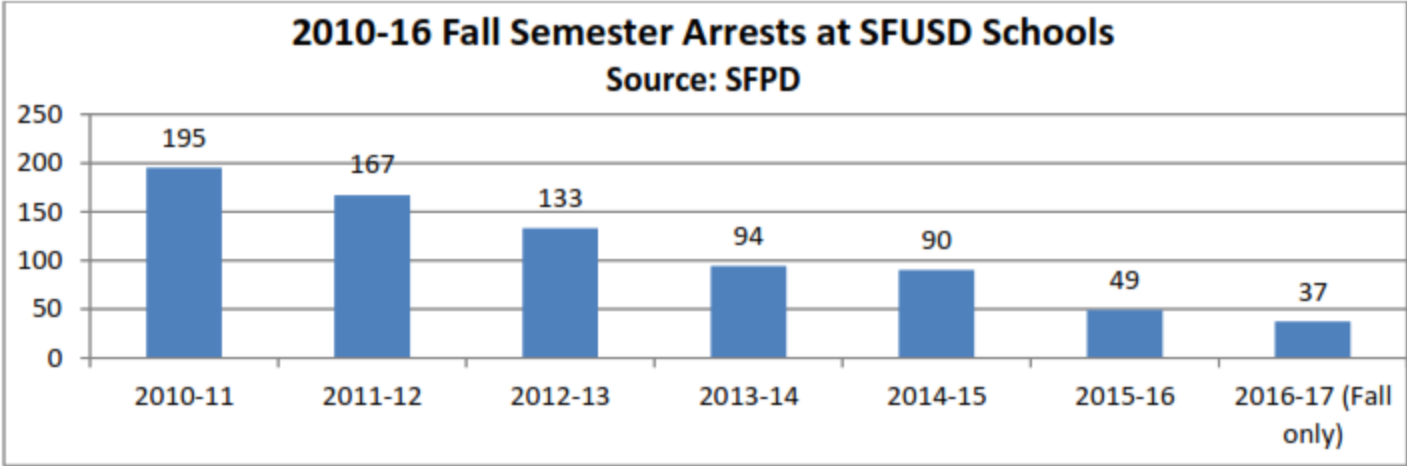
# Reasons for Office Referrals



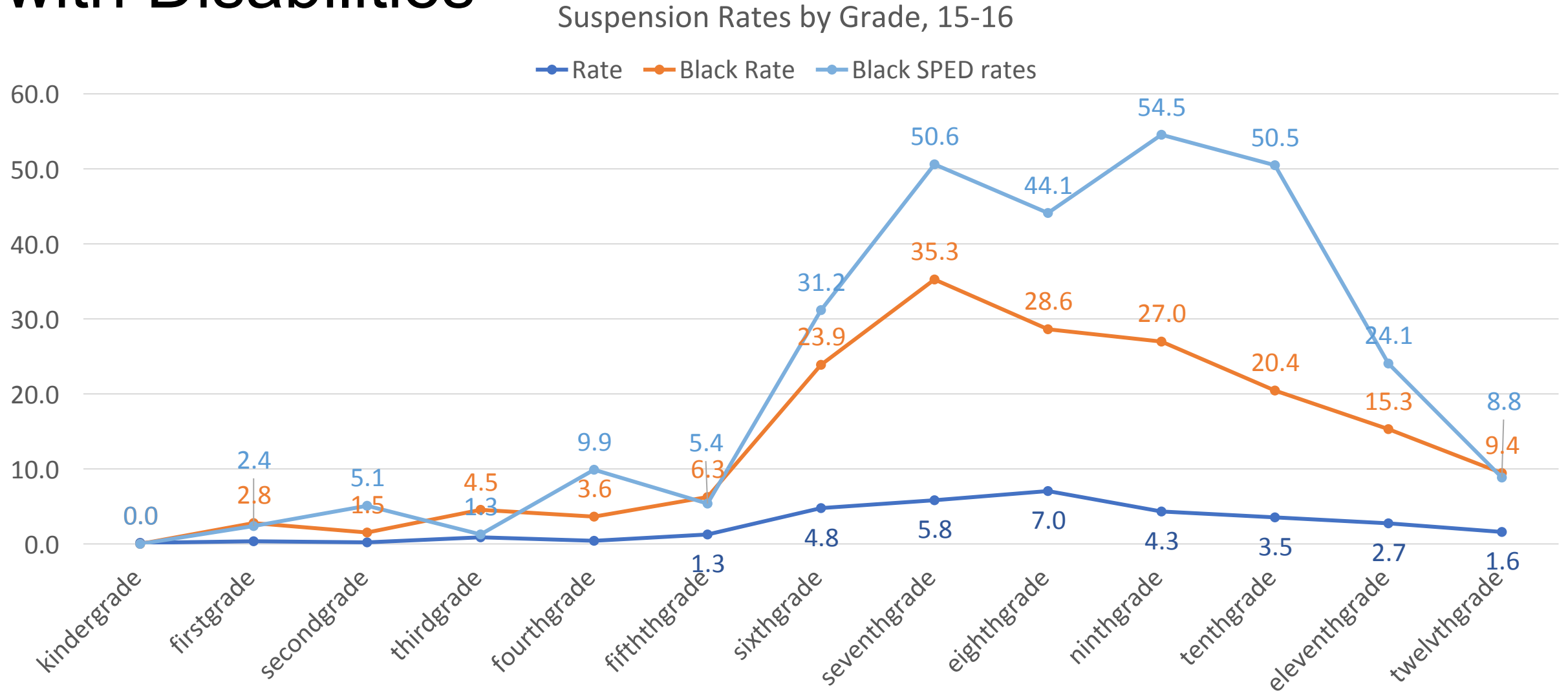
# Average number of Office Referrals per student by race, 1415



# Arrests at SFUSD Schools



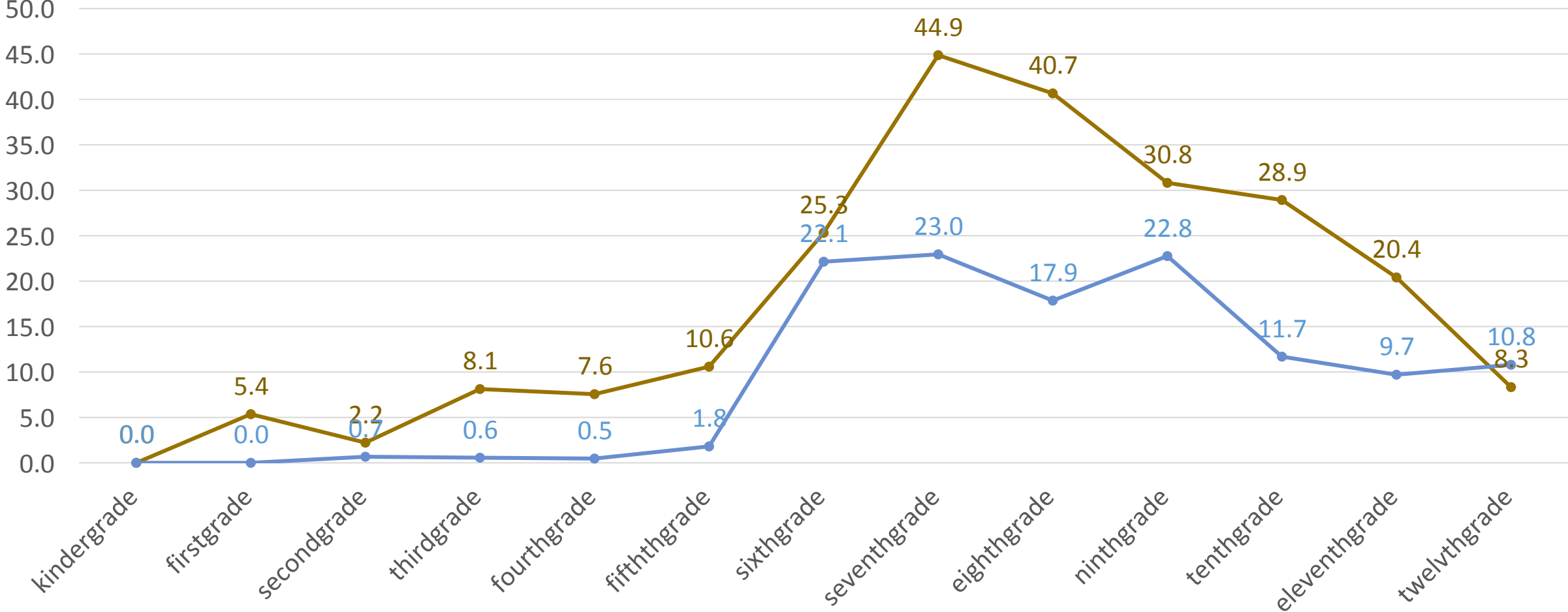
# A deeper look at 1516 Suspension Rates: All Students vs. Black Students vs. Black Students with Disabilities



# Suspension Rates among Black Students by Gender

Suspension Rates for All Students vs. Black Students, 15-16

Black Male Susp Rate    Black Female Suspension Rate





# Suspension Rates among Black Students by Gender and Disability Status

Suspension Rates by Grade Level, 15-16

Black Male SPED rates    Black Female SPED rates

